



MAIN CHARACTERISTICS

Elegant and functional, this room can be divided into two separate spaces for parallel sessions. High quality finishings and furniture throughout the room with soundproof and sound-absorbing beech wood walls and cherry wood floors. Standard, ready to go set up and lay out.

Thonet linking lecture chairs with maximum comfort can be provided.

The room is located on the first floor.

FEATURES:

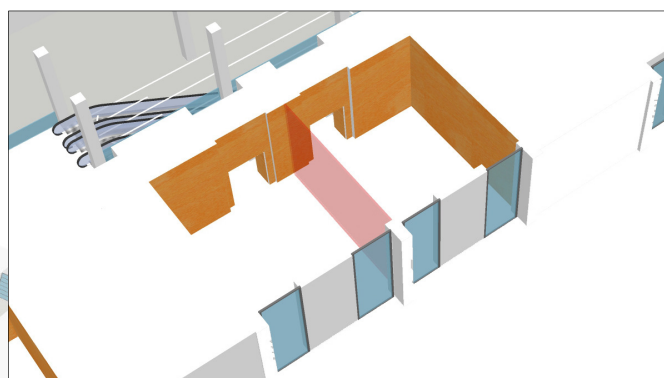
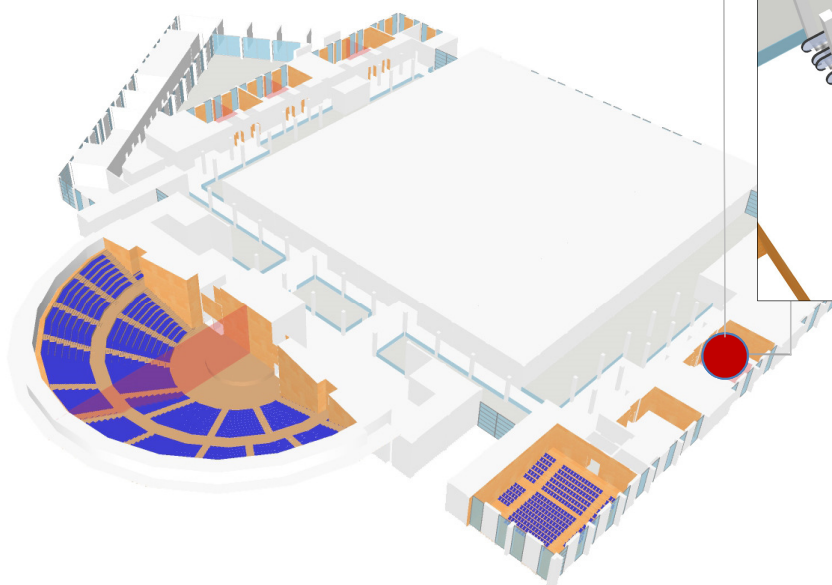
- Soundproof and sound-absorbing full height beech wood partition walls can divide the room into 2 separate spaces
- Natural light and remote controlled blackout facilities
- Dimmer lights for selected areas
- Standard 2 x 6 m stage with Presidential table and podium
- Stage lighting truss system with stage dimmer lights
- Audio amplification system with wired and radio microphones
- Screen and hanging video projection system for front screen projection in every part of the room
- Extensive audio, video and lighting connections
- Mobile video production
- Simultaneous translation service with up to 8 languages
- High density Wi-Fi coverage
- LCD monitor on both Presidential table and podium
- 2 entrance points to the room
- Customisable digital signage at each entrance to room

The origin of the name

The Ponte Room takes its name from the Tiberius Bridge that was built during the rule of Augustus and Tiberius (14 - 21 A.D) and has long been admired by visitors to the city. Andrea Palladio refers to the bridge in his famous essay on architecture in 1570 as being "the most beautiful and most worthy of consideration both for its strength and its compartment". The monument stands out for the remarkable geometry of its arches, which reflect the water below, making a perfect circle, and for its robust structure softened by simple decorative elements. Up until the 20th century, it was the only link between the quaint fishing village of San Giuliano, that had developed on both sides of the Via Emilia since Roman times.

PONTE ROOM

FIRST FLOOR



TECHNICAL DATA

	Height (m)	Area m2	Size (m)	Full room capacity	Classroom style	Horseshoe style	Boardroom style	Table service	Cocktail service
Full room	4.20	133.80	15.20 x 8.80	110	64	35	40	80	110
Ponte Room 1	4.20	66.85	7.55x8.80	44	24	15	18	32	55
Ponte Room 2	4.20	66.85	7.55x8.80	44	24	15	18	32	55

TECHNICAL INFORMATION

Floor weight capacity	Hanging fixtures permitted	Flooring	Walls	Ceiling	Natural light	Blackout facilities
400	YES	DARK CHERRY WOOD	LIGHT BEECH WOOD	PIERCED WHITE PLASTERBOARD	YES	YES

VIRTUAL TOUR LINK - take a 360° virtual tour of the Ponte Room at <https://en.riminipalacongressi.it/spaces/virtual-tour>

Palacongressi di Rimini - Via della Fiera 23 - 47923 Rimini - Italy - Tel +39 0541 711500 - Fax +39 0541 711505
info@riminipalacongressi.it - www.riminipalacongressi.it

PONTE ROOM

FIRST FLOOR

PHOTOGALLERY

