

ARENGO ROOM

TECHNICAL SHEET





MAIN CHARACTERISTICS

An elegant and functional room with high quality finishings and furniture throughout and with soundproof and sound-absorbing beech wood walls and cherry wood floors. The room is fitted with comfortable Frau upholstered lecture chairs with incorporated power sockets. Standard, ready to go set up and lay out. The room is located on the first floor.

FEATURES:

- Natural light and remote controlled blackout facilities
- Dimmer lights for selected areas
- Standard 2 x 10 m stage with Presidential table and podium
- Lighting truss system
- Lighting truss system for stage with dimmer lights
- Audio amplification system with wired and radio microphones
- Suspended video projection system suitable for various formats for every part of the room
- Front projection system in various sizes and video projector
- 1 component video camera and 1 video composite camera
- Extensive audio, video and lighting connections
- Fixed and mobile video production
- 1 translation booth with simultaneous translation service with up to 16 languages
- High density Wi-Fi coverage
- LCD monitor on both Presidential table and podium
- 1 entrance point to the room
- Customisable digital signage at entrance to room

PROJECT IMPLEMENTATION AND DEVELOPMENT ON REQUEST:

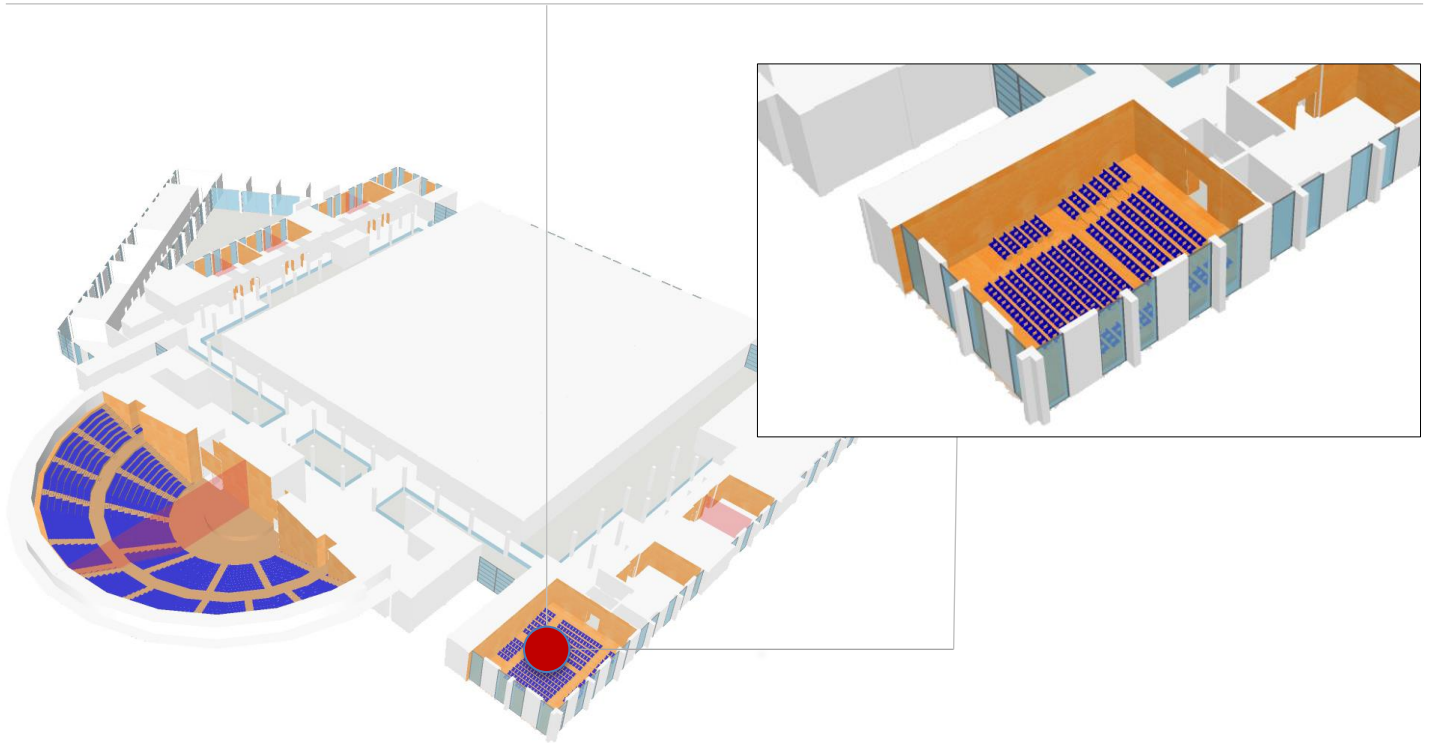
- Other set-up options available based on feasibility

The origin of the name

The Arengo Room takes its name from the historical building, Palazzo dell'Arengo, to be found in Piazza Cavour. It was built in 1204 to host sessions of the People's Council, namely the Arengo, in Medieval times. They gathered in the spacious room on the first floor with its four enormous polifora windows that characterise the facade. Under the gothic arches on the ground floor, bankers and notaries carried out their work. On the back wall of the portico two relics have survived through the ages: the Monte di Pietà door and a stone painting depicting the measurements used in the Rimini area. There are also many relics that bear witness to the many illustrious figures that have passed through Rimini throughout history.

ARENGO ROOM

FIRST FLOOR



TECHNICAL DATA

Height (m)	Area m2	Size (m)	Full room capacity	Classroom style	Horseshoe style	Boardroom style	Table service	Cocktail service
4.20/5.25	305	20.30 x 15	282 (fixed seats)	-	-	-	-	-

TECHNICAL INFORMATION

Floor weight capacity	Hanging fixtures permitted	Flooring	Walls	Ceiling	Natural light	Blackout facilities
400	YES	DARK CHERRY WOOD	LIGHT BEECH WOOD	STRETCHED METAL MESH SOUND-ABSORBING AND SOUND REFLECTING + PERIMETRAL SOUND-ABSORBING PLASTERBOARD	YES	YES

VIRTUAL TOUR LINK - take a 360° virtual tour of the Arengo Room at <https://en.riminipalacongressi.it/spaces/virtual-tour>

ARENGO ROOM

FIRST FLOOR

PHOTOGALLERY

