



**PALACONGRESSI
DI RIMINI**



PIAZZA HALL

Technical Sheet

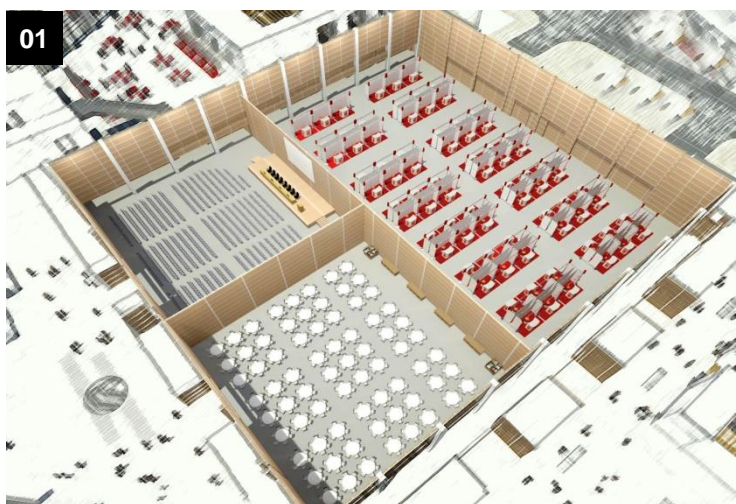
01. RENDERING & EQUIPMENT

02. PHOTOGALLERY & EVENTS

03. TECHNICAL SHEET & LINKS

RENDERING & EQUIPMENT

NAME	Piazza Hall
POSITION	Ground floor
CAPACITY	4,700 seats full room
MAIN CHARACTERISTICS	Wide and multifunctional, dividable into six spaces. Customisation of set-up's and spaces for congresses, shows, catering and exhibition areas. Tracks and fixed hooks for suspending equipment everywhere in the hall. Underfloor service ducts for permanent cabling - including IT, electric, and water. Direct access for heavy vehicles. Beechwood soundproof partition walls with resin-washed flooring. Chairs by Thonet, with writing board.
TECHNICAL EQUIPMENT	<ul style="list-style-type: none"> ▪ stage (customised dimensions) with head table and speakers' rostrum; ▪ natural light thanks to the 72 skylights with electric darkening system; ▪ lighting system for stage with dimmable lights; ▪ PA system with cable and radio microphones; ▪ n.8 screens for front projections and video projectors (standard set-up at 90°); ▪ LCD monitor on head table and speakers' rostrum; ▪ n.16 simultaneous translation booths; ▪ n.4 control rooms, plus n.1 master control booth.



01. hall location, section ground floor
02. inside view, 4,700 seats

Origin of the name of the historical sites in Rimini

For centuries the Piazza has been the beating heart of the city: a meeting place dear to the people of Rimini and centre of local political power. Rimini's long history emerges from the monuments that make up the Piazza: the Medieval municipal buildings, the Renaissance Pigna fountain, the eighteenth century Fish Market and the neoclassical facade of the Town Theatre, providing a backdrop to the monument of Pope Paul V.

 **PHOTOGALLERY & EVENTS**



Full Room



Divided room, Medical-scientific National Congress



Cultural Event, suspended equipment



Corporate Event, catering area



Corporate Event, exhibition area



TECHNICAL SHEET

		FULL ROOM
Height	12 m	
Gross area	4.753,65 m ²	
Size (length x room)	70 x 67,70 m	
Seats	4.700	

		PIAZZA 1,2,3,4,5,6
Height	12 m	
Gross area	space personalisation	
Size (length x room)	space personalisation	
Seats	personalisation of seat set-ups	



EXTRA USEFUL LINKS

In this section you find useful links to discover further on-line information and helpful multimedia files.

[Visit the Piazza Hall through the 360° virtual tour](#)

[Visit the Piazza Hall on the technical layouts](#)

PIAZZA HALL

Technical Sheet



**PALACONGRESSI
DI RIMINI**

Via della Fiera 23 - 47923 Rimini - Tel +39 0541 711500 - Fax +39 0541 711505 - info@riminipalacongressi.it - www.riminipalacongressi.it

