



**PALACONGRESSI
DI RIMINI**



FARO ROOM

Technical Sheet

01. RENDERING & EQUIPMENT

02. PHOTOGALLERY & EVENTS

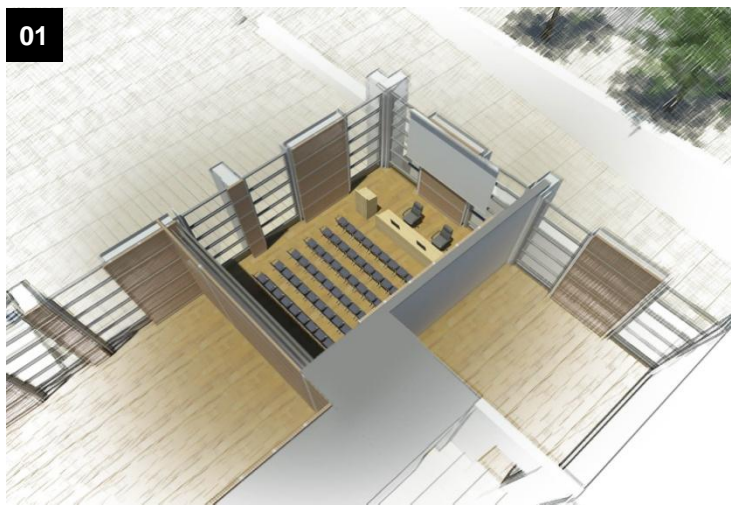
03. TECHNICAL SHEET & LINKS

RENDERING & EQUIPMENT

NAME	Faro Room
POSITION	First floor
CAPACITY	54 seats full room
MAIN CHARACTERISTICS	Elegant and functional, with high quality finishing, soundproof beechwood partition walls and cherrywood floors. Stage and chairs by Thonet, with writing board.

TECHNICAL EQUIPMENT

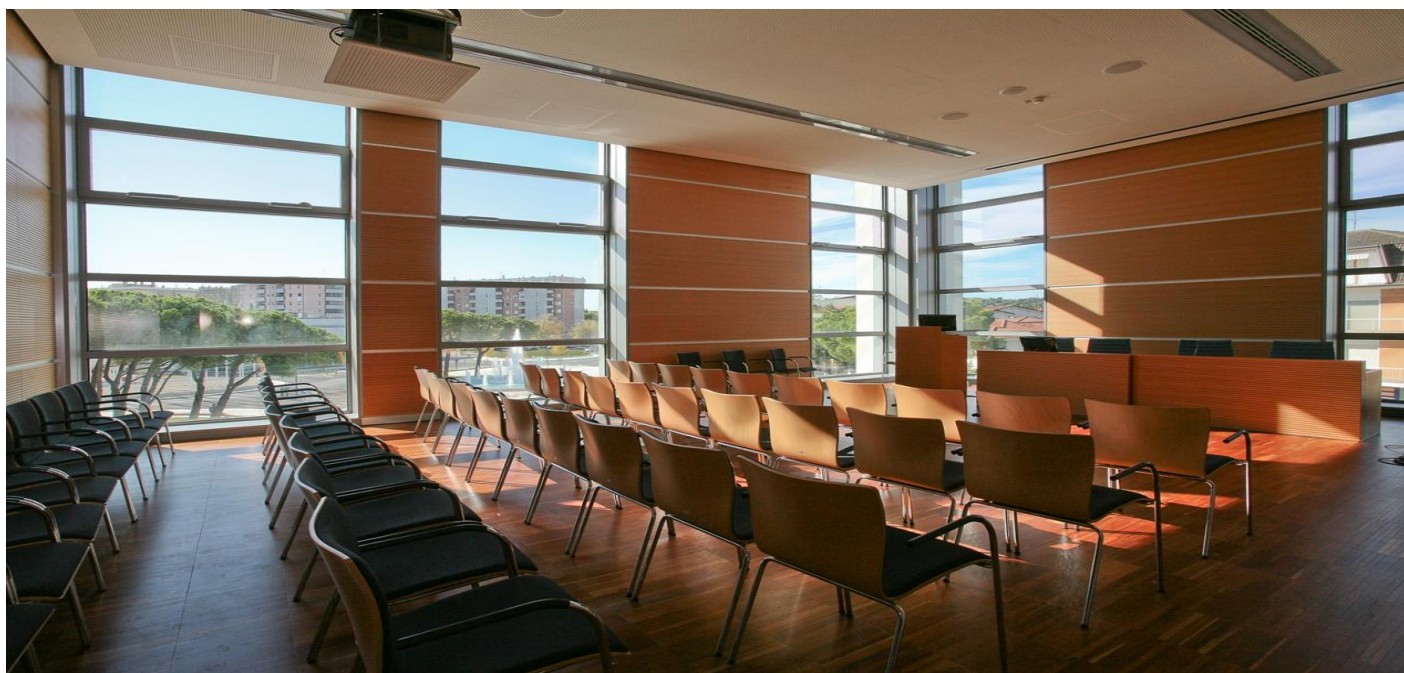
- head table and speakers' rostrum
- natural light with electric darkening system;
- lighting system with dimmable lights;
- PA system with cable and radio microphones;
- lighting system for stage with dimmable lights;
- n.1 screen for front projections and video projectors (standard set-up at 90°);
- possibility to place a control booth in the room.



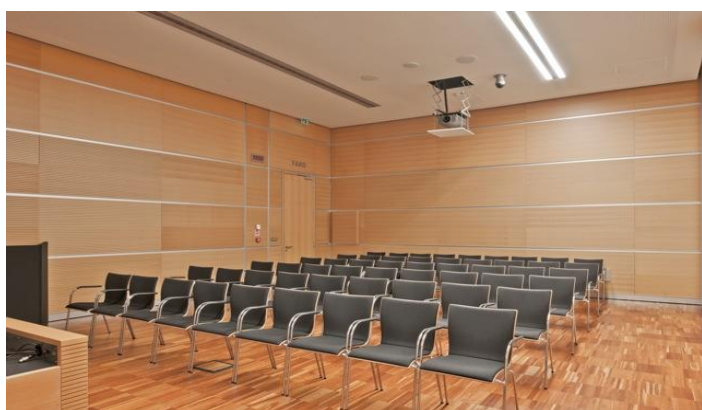
01. room location, section floor 1
02. Inside view, 54 seats

Origin of the name of the historical sites in Rimini
Serving as a guiding light for sailors and as a lookout for pirate ships, the Lighthouse was built in 1763 by Giovan Francesco Buonamici, who completed Luigi Vanvitelli's design of a fortified structure on stilts beyond the head of the pier. Due to the rapid advancement of the coastline, today it has become part of the urban landscape.

 **PHOTOGALLERY & EVENTS**



Full Room



Chairs by Thonet



Projector, video camera



Screen, natural light



Artificial lighting, darkening system



TECHNICAL SHEET

		FULL ROOM
Height	4,20 m	
Gross area	77,11 m ²	
Size (length x room)	10 x 7,30 m	
Seats	54	



EXTRA USEFUL LINKS

In this section you find useful links to discover further on-line information and helpful multimedia files.

[Visit the Faro Room through the 360° virtual tour](#)

[Visit the Faro Room on the technical layouts](#)

FARO ROOM

Technical Sheet



**PALACONGRESSI
DI RIMINI**

Via della Fiera 23 - 47923 Rimini - Tel +39 0541 711500 - Fax +39 0541 711505 - info@riminipalacongressi.it - www.riminipalacongressi.it

