



**PALACONGRESSI  
DI RIMINI**



# **BORGO ROOM**

Technical Sheet

**01. RENDERING & EQUIPMENT**

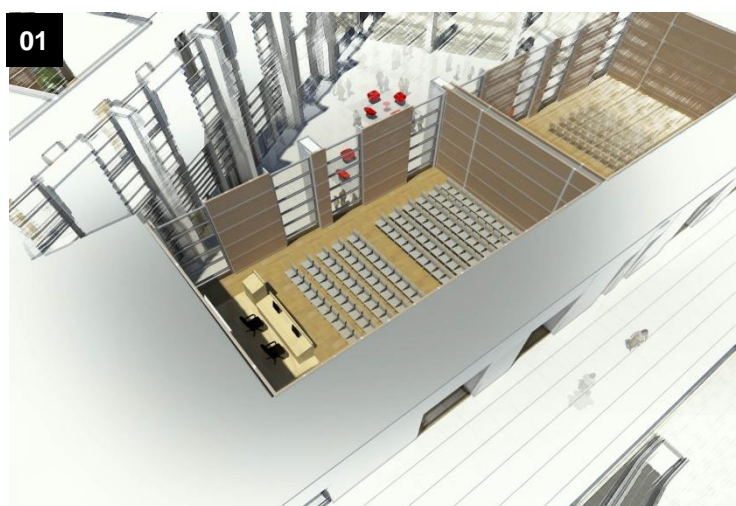
**02. PHOTOGALLERY & EVENTS**

**03. TECHNICAL SHEET & LINKS**

# **RENDERING & EQUIPMENT**

<b>NAME</b>	Borgio Room
<b>POSITION</b>	First floor
<b>CAPACITY</b>	110 seats full room
<b>MAIN CHARACTERISTICS</b>	Elegant and functional, with high quality finishing, soundproof beechwood partition walls and cherrywood floors. Stage and chairs by Thonet, with writing board.

- TECHNICAL EQUIPMENT**
- stage (2 x 6 m) with head table and speakers' rostrum;
  - natural light with electric darkening system;
  - lighting system for stage with dimmable lights;
  - PA system with cable and radio microphones;
  - n.2 screens for front projections and video projectors (standard set-up at 90°);
  - LCD monitor on head table and speakers' rostrum;
  - customised set-up for simultaneous translation booth;
  - possibility to place a control booth in the room near the stage.



**01. room location, section floor 1**  
**02. inside view, 110 seats**

**Origin of the name of the historical sites in Rimini**

*Borgio San Giuliano, with its narrow cobbled streets and tiny squares is the most characteristic of the villages in Rimini. Many of the old fishermen's houses have been renovated and their facades decorated with murals dedicated to an illustrious Rimini native, the film director Federico Fellini (Rimini 1920 – Rome 1993).*

**PHOTOGALLERY & EVENTS**



Full Room



Medical-scientific National Congress



Video camera, reflectors, videoprojector



Darkened room, chairs by Thonet



Divided room, Medical-scientific National Congress



## TECHNICAL SHEET

Height	4,20 m	<b>FULL ROOM</b>
Gross area	136,17 m <sup>2</sup>	
Size (length x room)	15,20 x 8,80 m	
Seats	110	

Height	4,20 m	<b>BORGO 1</b>
Gross area	68 m <sup>2</sup>	
Size (length x room)	7,60 x 8,80 m	
Seats	44	

Height	4,20 m	<b>BORGO 2</b>
Gross area	68 m <sup>2</sup>	
Size (length x room)	7,60 x 8,80 m	
Seats	44	



## EXTRA USEFUL LINKS

In this section you find useful links to discover further on-line information and helpful multimedia files.

[Visit the Borgo Room through the 360° virtual tour](#)

[Visit the Borgo Room on the technical layouts](#)

# **BORGO ROOM**

Technical Sheet



**PALACONGRESSI  
DI RIMINI**

Via della Fiera 23 - 47923 Rimini - Tel +39 0541 711500 - Fax +39 0541 711505 - [info@riminipalacongressi.it](mailto:info@riminipalacongressi.it) - [www.riminipalacongressi.it](http://www.riminipalacongressi.it)

