

# OROLOGIO ROOM

TECHNICAL SHEET







## MAIN CHARACTERISTICS

Situated in a reserved area of the venue, this room can be used as a back office for the administrative or operational activities of conferences/events, such as secretariat, production office, staffroom or for board, committee or presidential meetings. Standard, ready to go set up and lay out. Thonet linking lecture chairs with maximum comfort can be provided. The room is located on the first floor.

## FEATURES:

- Natural light and remote controlled blackout facilities
- Dimmer lights for selected areas
- Presidential table and podium
- Audio amplification system with wired and radio microphones
- Electrical connections and internet sockets in underfloor outlet boxes or wall outlets
- Fixed video production
- High density Wi-Fi coverage
- LCD monitor on both Presidential table and podium
- 1 entrance point to the room
- Customisable digital signage at entrance to room

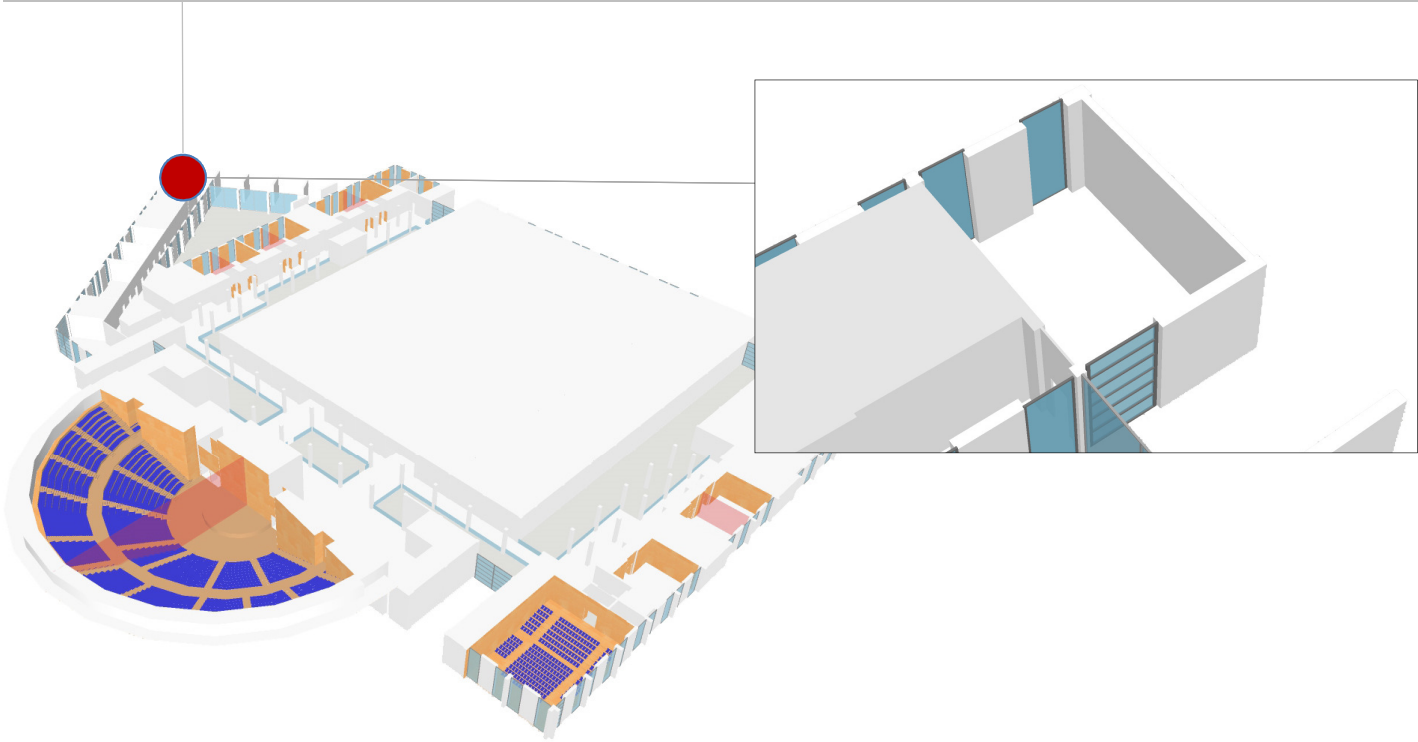
### The origin of the name

The Orologio Room takes its name from the Clock Tower in Piazza Tre Martiri which was built in the late sixteenth century in the wide open space known in Roman cities as the foro, or main square. It was later restored in the 1700s by Giovan Francesco Buonamici who designed the elegant pinnacle for the bell tower, equally important for telling the time as the hands of a clock.

The clock has two dials: one marks the passing of daily time, with hands in the shape of rays of sun, the other shows celestial time. In fact, the astronomical clock face has a magnificent terracotta frieze that shows the days and months of the year, the moon and planets' orbit, zodiac signs and various celestial constellations.

# OROLOGIO ROOM

FIRST FLOOR



## TECHNICAL DATA

| Height (m) | Area m2 | Size (m)  | Full room capacity | Classroom style | Horseshoe style | Boardroom style | Table service | Cocktail service |
|------------|---------|-----------|--------------------|-----------------|-----------------|-----------------|---------------|------------------|
| 4.20       | 91.86   | 11.10 x 8 | 70                 | 35              | 23              | 30              | 48            | 75               |

## TECHNICAL INFORMATION

| Floor weight capacity | Hanging fixtures permitted | Flooring         | Walls | Ceiling                    | Natural light | Blackout facilities |
|-----------------------|----------------------------|------------------|-------|----------------------------|---------------|---------------------|
| 400                   | YES                        | DARK CHERRY WOOD | WHITE | PIERCED WHITE PLASTERBOARD | YES           | YES                 |

VIRTUAL TOUR LINK - take a 360° virtual tour of the Orologio Room at <https://en.riminipalacongressi.it/spaces/virtual-tour>